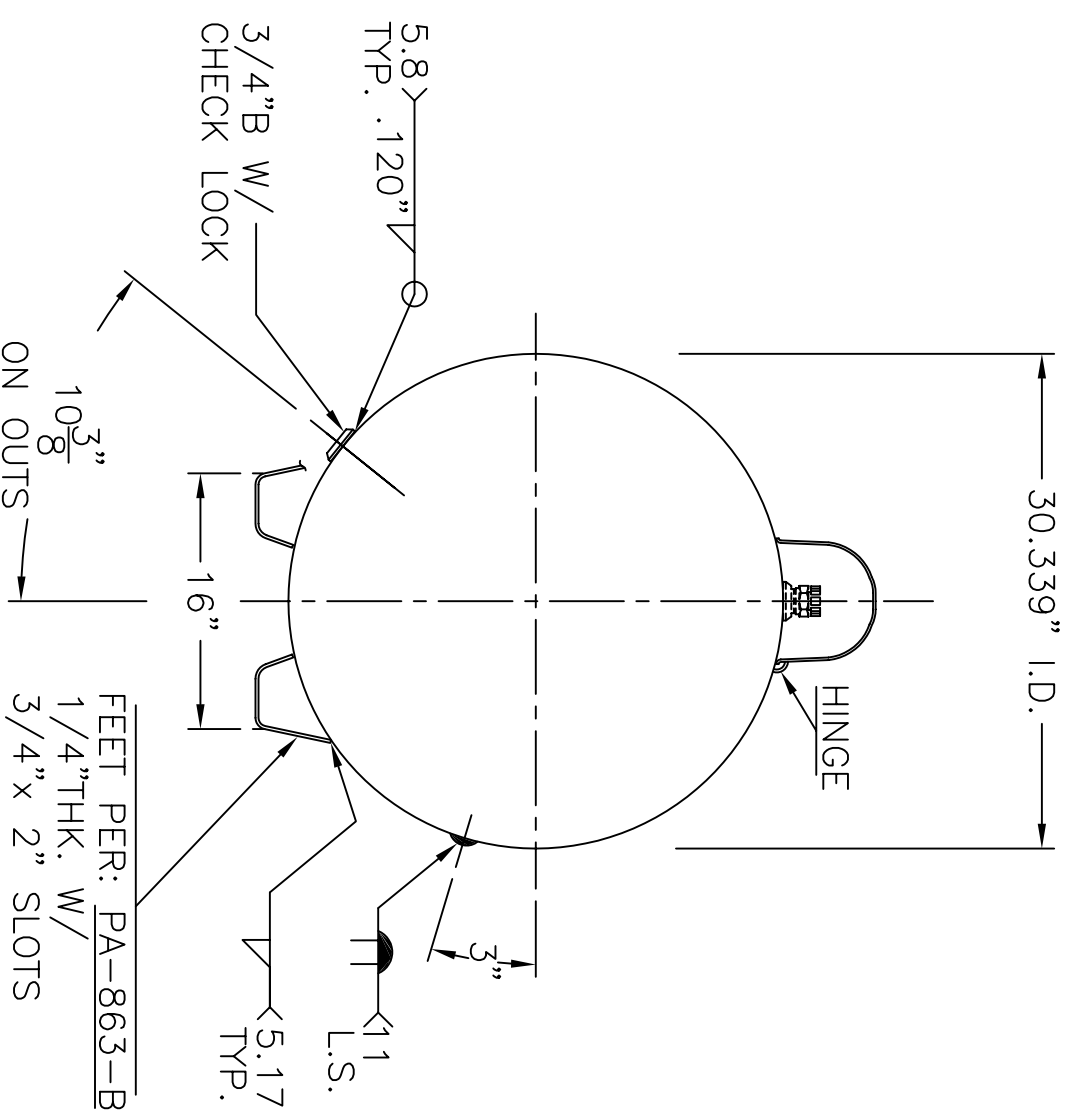
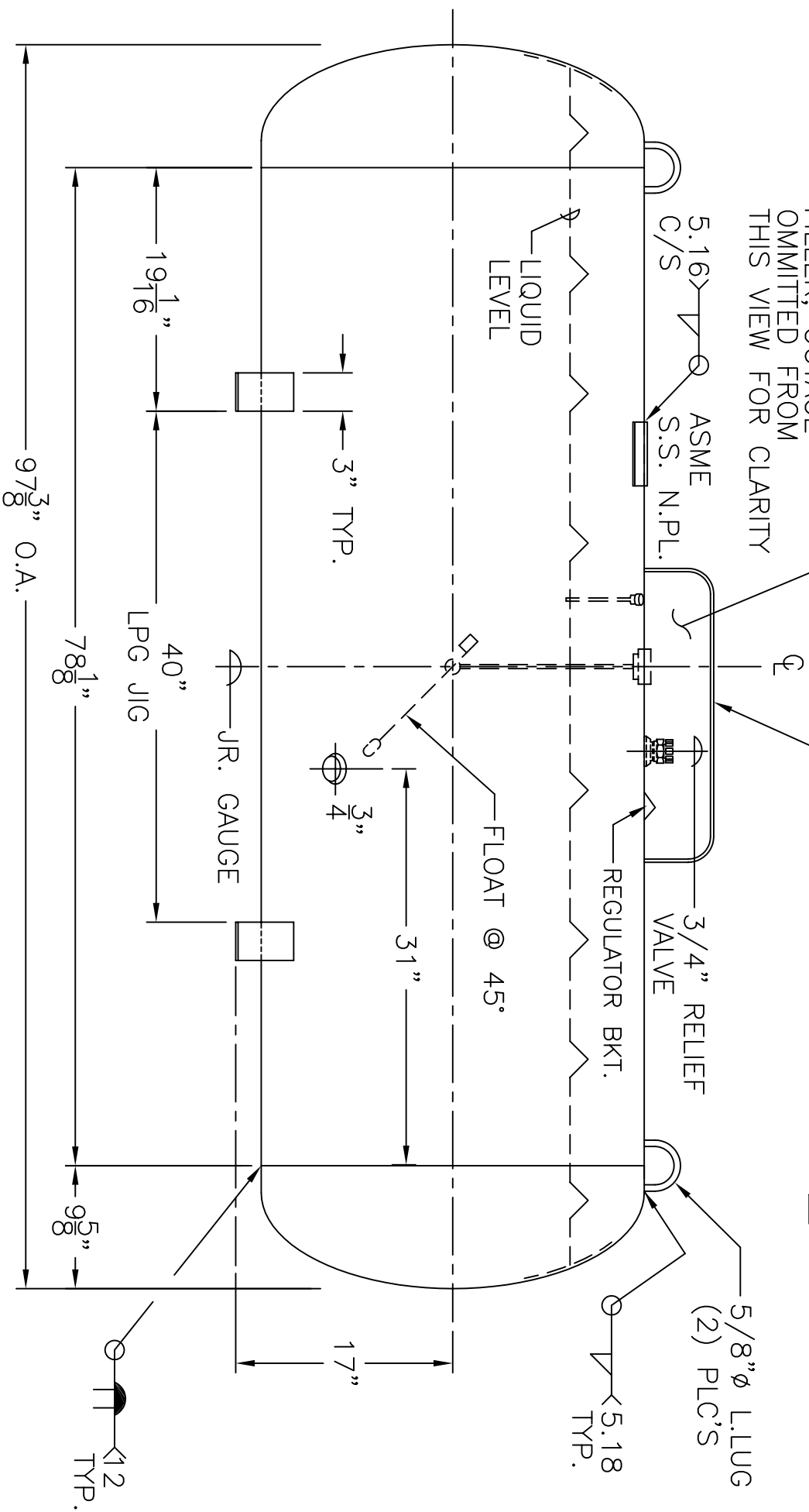


NOTE: P.O.L. 9101R1  
FILLER, OUTGAGE  
OMMITTED FROM  
THIS VIEW FOR CLARITY

LAYOUT DIMENSIONS PER:  
UNIVERSAL-----□ = SK-2617 REV. II  
CALIFORNIA STD.-□ = PA-432-A  
NEVADA-----□ = PA-433-A



GENERAL NOTES

1. SHELL: .218" SA-455
2. HEADS: .179" SA-455 2:1 S.E.  
JOGGLE
3. X-RAY: RT-4 SPOT L.S. & G.S.
4. STRESS REL., NO
5. CORR. ALLOW: NONE
6. ASME SEC. VIII DIV. 1, 2007 ADD 2009
7. M.A.W.P. 250 PSIG. @ 200 °F  
M.D.M.T. -20 °F @ 250 PSIG.
8. HYDRO: 327 PSIG. MIN.
9. GAL: 288
10. EMPTY WT: 642# APPROX.
11. DEHYDRATE INSIDE
12. SURFACE AREA: 69.4 SQ. FT.
13. C.F.M. REQ'D. 1735

<b>P-288</b>	REV. 12-28-09
	DATE: 3-9-87
FOR: HANSON STANDARD	
HORIZ. PROPANE TANK	
BY: J.G.	
SCALE: 1"=12"	
<b>ROY E. HANSON JR. MFG.</b>	
1600 E. WASHINGTON BLVD. LOS ANGELES, CA 90021	